

Security Products Catalog **Thermal Cameras and Cores**



YOUR PARTNER FOR THERMAL
IMAGING SECURITY APPLICATIONS

About Opgal Security Products

OPGAL is a leading global manufacturer of innovative thermal imaging cameras and engines. For over 25 years Opgal's cooled and uncooled thermal products have been successfully implemented worldwide, serving customers in the security, defense and aviation markets. Opgal's thermal security cameras are easy to deploy, highly reliable, and provide outstanding quality and performance. Opgal's vast experience in the field, and its commitment to customer needs, ensures its customers benefit from both ease of use of off-the-shelf security cameras as well as customized tailor made solutions.

Thermal Security Products

Opgal offers a complete range of thermal security products, including OEM engines, outdoor cameras and multi sensors observation head on pan-tilt units.

Opgal's thermal security cameras are compatible with large scale of security deployments – offering products for the high-end security sector and the commercial industrial sector.

Customized Products

Opgal is committed to providing its customers with unique customization capabilities, special features, adaptations, as well as full scale custom deployments upon request.

Backed by an experienced security team and special operations unit, Opgal places a special emphasis on adapting its products to the needs of its customers.

OEM Thermal Solutions

Opgal offers a wide range of OEM solutions ideal for your choice of system integration.

Offering state of the art Opgal thermal cores combined with optics and box cameras which are environmental proof.

Thermal Security Products



CompactSec™ Series

Commercial cost-effective thermal cameras



EyeSec™ Series

Superior performance, advanced uncooled security thermal cameras for surveillance and monitoring



EyeSec™ Modular

Modular thermal cameras designed according to customer requirements



RangeSec™ Series

Long range, extremely high performance cooled thermal camera



DualSec™ Series

Day/Night Dual FOV, high-end combination thermal and CCD camera

OEM Thermal Solutions

Engines and Open Frame

COMPACT EYE™

Ultra compact, low power, superb performance, affordable

- 384 x 288, uncooled ASi 8-14 μ detector, 25 micron pitch.
- Available with a variety of lenses: 6mm - 100mm



EYE R 25™

Miniature, extra high-performance and special features, powerful algorithms and capabilities.

- 320x240 pixels VOx or ASi, 8-14 μ detector, 25 micron pitch
- Available with a variety of motorized/manual lenses: 6mm – 100mm



EYE R 640™

High resolution, small sized, lightweight, high performance solution.

- 640x480 pixels ASi, 8-14 μ detector, 25 \ 17micron pitch
- Available with a variety of motorized/manual lenses: 6mm – 100mm



EYE LITE™

Mid Wave IR advanced thermal imager, auto focus, continuous zoom, cooled technology.

- 320x240 pixels, 3-5 μ detector, 30 micron pitch
- Available with continuous zoom 19 - 275mm / doubler 47.5 - 687.5mm



Box cameras

MERON™

A small size, lightweight, IP65, uncooled thermal imaging **box camera** based on Opgal's latest Eye R25™ or CompactEye™ high-performance engine, available with a variety of lenses.



GILBOA™

A high performance, ruggedized, IP66 (IP67 optional), uncooled thermal imaging **box camera** based, 320x240 or 640x480 with a variety of lenses.



ARBEL™

A ruggedized **dual field of view** 45mm_135mm thermal imaging **box camera** with a high sensitivity uncooled microblometer available in both 384X288 and 640X480 formats.



CompactSec™ Series

Commercial Thermal Security Camera

CompactSec™ Cameras

- Excellent imaging in total darkness and foggy weather.
- Athermalized lenses require no zoom or focus adjustment
- Lightweight, low power
- Designed for outdoor applications, thus IP66 standard – sealed for water, dust, humidity.
- Easy integration and robust operation in all environmental conditions.



CompactSec™ Cameras on PTZ

CompactSec cameras are available on a Pan Tilt platform, providing 360 degrees thermal observation to track and follow suspicious moving targets.

Performance

CS-8

CompactEye **8.5mm Athermal**
384 X 288, 64.7° FOV



Human target

■ Detection: 160m
■ Recognition: 55m



NATO target

■ Detection: 390m
■ Recognition: 130m

CS-19

CompactEye **19mm Athermal**
384 X 288, 28° FOV



Human target

■ Detection: 370m
■ Recognition: 120m



NATO target

■ Detection: 920m
■ Recognition: 310m

CS-35

CompactEye **35mm Athermal**
384 X 288, 15.6° FOV



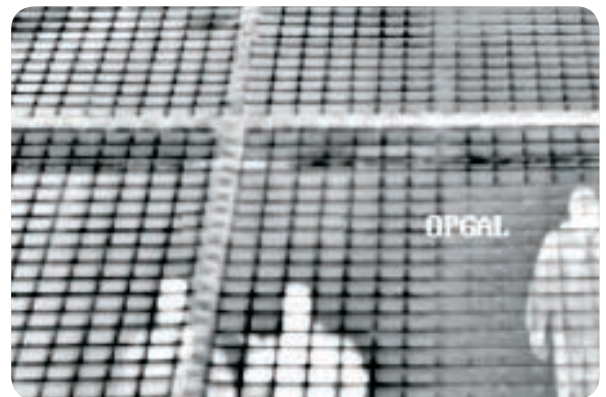
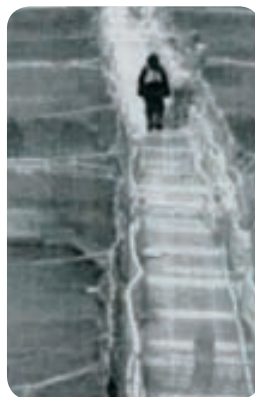
Human target

■ Detection: 650m
■ Recognition: 220m



NATO target

■ Detection: 1600m
■ Recognition: 540m



Optional Brackets

Ceiling Mount



PTZ Pedestal Adapter



Corner / Pole Mount



CompactSec™ Integration Kit

- Integration harness cable
- Operational CD
- Printed User Manual
- Input power adaptor (indoor use)

EyeSec™ Series

Superior Security Thermal Camera

EyeSec™ Cameras

- Long wave thermal imager cameras designed for the commercial security and Home Land Security market
- Selection of motorized lenses or dual FOV lens. (25mm, 50mm, 75mm, 45_135mm)
- Available resolutions: 320X240 or 640X480



EyeSec™ Cameras on PTZ

EyeSec cameras are available on a Pan Tilt platform, providing 360 degree thermal observation to track and follow suspicious moving targets. The motorized lenses enable focus control at each point while changing the observation direction.

Performance

ES-25Q / ES-25V

25mm Motorized

320X240 / 640X480



Human target

Detection: 460m
Recognition: 150m



NATO target

Detection: 1150m
Recognition: 380m

ES-50Q / ES-50V

50mm Motorized

320 X 240 / 640X480



Human target

Detection: 920m
Recognition: 310m



NATO target

Detection: 2300m
Recognition: 770m

ES-75Q / ES-75V

75mm Motorized

320X240 / 640X480



Human target

Detection: 1400m
Recognition: 460m



NATO target

Detection: 3450m
Recognition: 1150m

ES-45_135Q / ES-45_135V

45_135mm Dual FOV

320X240 / 640X480



Human target

Detection: 830m_2500m
Recognition: 280m_830m



NATO target

Detection: 2070m_6200m
Recognition: 690m_2070m

EyeSec™ Modular

Modular thermal cameras configured according to customer requirements. 24/7 outdoor security camera, secured in a metal enclosure, shock resistance and immunity to vandalism.

- **Modular with different uncooled engines:**
 1. CompactEye™ - 384X288
 2. EyeR25™ - 320X240
 3. EyeR640™ - 640X480
- **Modular with different optics and focal length:**
 1. Manual
 2. Motorized
 3. Athermalized

Camera Models:

Camera models are packed and delivered with: Camera, Operational CD, including all necessary documentation and instructions, Integration harness cable, Printed User Manual, and Input power adaptor.



RangeSec™ Series

Short wave, extremely high performance thermal camera with cooled technology

RangeSec™ Cameras

- Designed for the high-end commercial security and Home Land Security markets.
- High sensitivity mid-wave (3-5μ) thermal imager cameras
- An advanced, auto focus, continuous zoom lens, doubler available
- Based on Opgal's superb cooled IR engine



Zoom Capabilities

- 19mm – 275mm continuous zoom,
- 47.5mm – 687.5mm continuous zoom using an optical 2.5x doubler lens,

Body

- Ruggedized, compact, lightweight and IP67

RangeSec™ Cameras on PTZ

RangeSec cameras are available on a Pan Tilt platform, providing 360 degrees thermal observation to track and follow suspicious moving targets.

Camera Models:

Camera models are packed and delivered as: Camera and Integration kit, including all necessary documentation and instructions, Operational CD, Integration harness cable, printed user manual and input power adaptor.

Performance

RS-300Q

22mm – 275mm continuous zoom

320X240, 2°-29° FOV



Human target

Detection: 4200m

Recognition: 1400m



NATO target

Detection: 10500m

Recognition: 3500m

RS-700Q

55mm – 678mm continuous zoom

320X240, 0.8°-12° FOV



Human target

Detection: 10600m

Recognition: 3500m



NATO target

Detection: 20700m

Recognition: 8800m



DualSec™ Series

High-End Security combination of thermal and CCD cameras

DualSec™ Cameras

- Continuous zoom CCD and dual FOV thermal imager
- Wide and narrow dual FOV 45mm_135mm **for security awareness**
- Enables detection, recognition and identification
- Resolution: 320X240 or 640X480
- 36x continuous zoom 1/4" Sony CCD camera
- IP66, ruggedized to withstand the harshest environmental conditions, including rain, direct sunlight, high humidity and dust.



DualSec™ Cameras on PTZ

DualSec on PTZ provides 360 degrees thermal observation including tilt movement where to track and follow suspicious moving targets.

Performance

DS 320

EyeR25 **45_135mm Dual FOV**
320X240



Human target

Detection: 830m_2500m
Recognition: 280m_830m



NATO target

Detection- 2070m_6200m
Recognition- 690m_2070m

DS 640

EyeR640, **45_135mm Dual FOV**
640X480



Human target

Detection: 830m_2500m
Recognition: 280m_830m



NATO target

Detection: 2070m_6200m
Recognition: 690m_2070m

DualSec™ WarningEye™ System

WarningEye™ system is the first of its kind state-of-the art fire detection solution capable of monitoring large geographic areas from forests to oil fields and wooden structures to urban areas **for smoke and fire detection**.

- Automatically sends an alarm and real-time video whenever fire or smoke is detected
- Identifies numerous fire spots simultaneously both in short and long ranges.



Flame Size



1m²



7m²



25m²

Detection Range

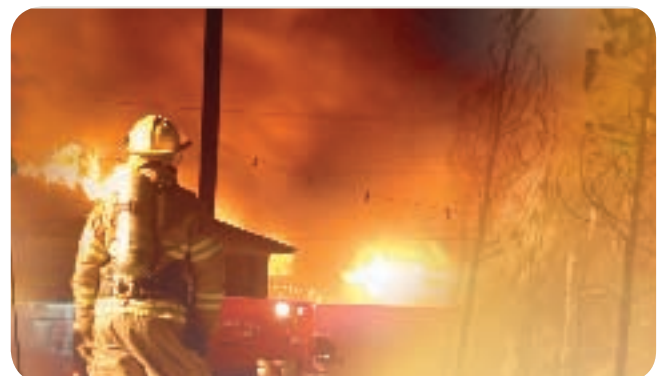
2.5KM

5KM

10KM

Camera Models:

Camera models are packed and delivered with: Camera, Operational CD including all necessary documentation and instruction, Integration harness cable, printed user manual, and input power adaptor.



Note: All distances defined in this catalog are calculated in geometrical values only, not accounting the atmospheric conditions



Opgal Optronics Industries Ltd.
P.O.Box 462, Industrial Area 5, Karmiel 20101, ISRAEL
Tel: 972-4-9953903 Fax: 972-4-9953900
E-mail: info@opgal.com Web: www.opgal.com