



M320 Series Network Video Recorder

GVD M320 is an intuitive yet comprehensive video solution for the 24 x 7 operations. The all-in-one super standalone box answers the surveillance requirements for multiple megapixel cameras with real-time triplet video operations. It is the best solution for mid-size installations, including police offices, factory facilities, government buildings and hypermarkets.

Key Feature

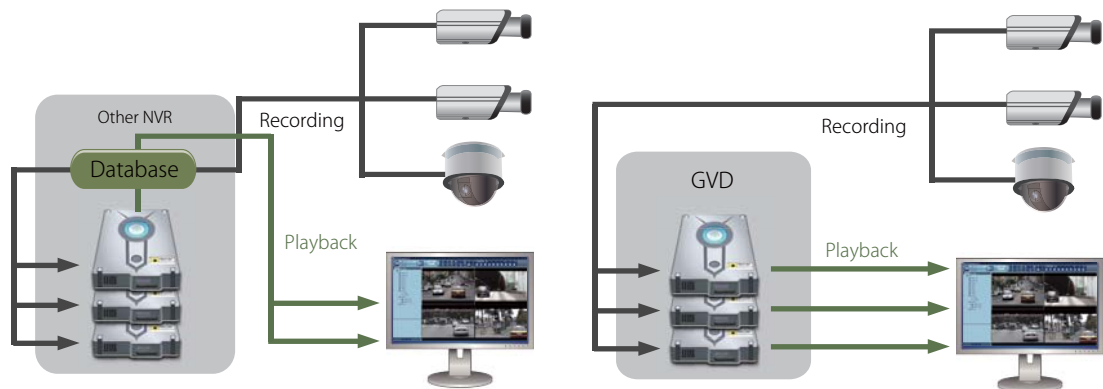
- Pre-built 24 channel licenses for all IP cameras from D1 up to 8M
- Supports large data throughput for multiple megapixel cameras and triplex video functions
- Provides the unique Time Sector Engine for best video read-write performance on hard disk drives
- Supports dual monitors for comprehensive video operations and alarm management
- Easy video export function with DVD, USB or network disk drives
- Supports HD NVR client software for simple remote viewing

Features That Make a Difference

Simultaneous Live Video View, Recording and Playback

■ Time Sector Engine (TSE)

Time Sector Engine uses GVD's proven state of art technology and brings best video performance in the industry. Without using the inefficient free database design, the Time Sector Engine retrieves video data directly from pre-allocated HDDs and guarantees the performance for simultaneous live video viewing, video recording and playback. With only a few clicks of mouse, users can view every instance promptly when someone crossed a perimeter or moved an object.



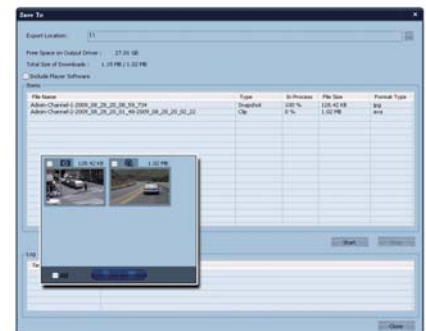
Database - Retrieves video from HDD through Index

TSE - Retrieves video directly from pre-allocated HDD

Exports Video with Clicks of Mouse

■ Spooler

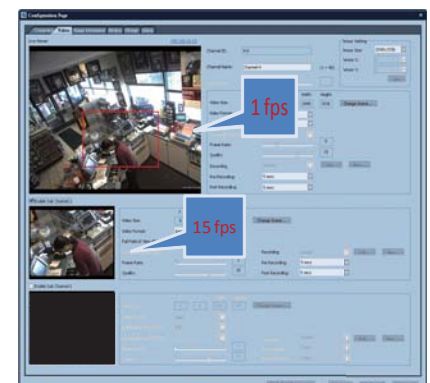
Spooler is an area designed for temporary video bookmarking. With single click of mouse, users can easily save and export video/images. The users could preview the video or snapshots in the spooler to verify the content and quality of video/images before exporting.



Saves Bandwidth and Storage by Sub-channel and Dual Codec Support

■ Sub-channel

By taking the full advantage of the camera multiple-streaming feature, GVD NVR supports up to two additional sub-channel streams independent from the main stream. With this powerful feature, users could flexibly plan their recording and streaming solution based on the available storage and bandwidth at each location.



Supports HTML Map for Premise Overviews and Quick Navigation

■ HTML map

GVD NVR supports HTML maps for easy navigation to cameras in multiple locations. Users can directly download maps from internet or from any drawing tools.

With the powerful HTML feature, users can put camera icons on the maps, add hyperlinks and bring up live video directly from the map with a click of mouse.

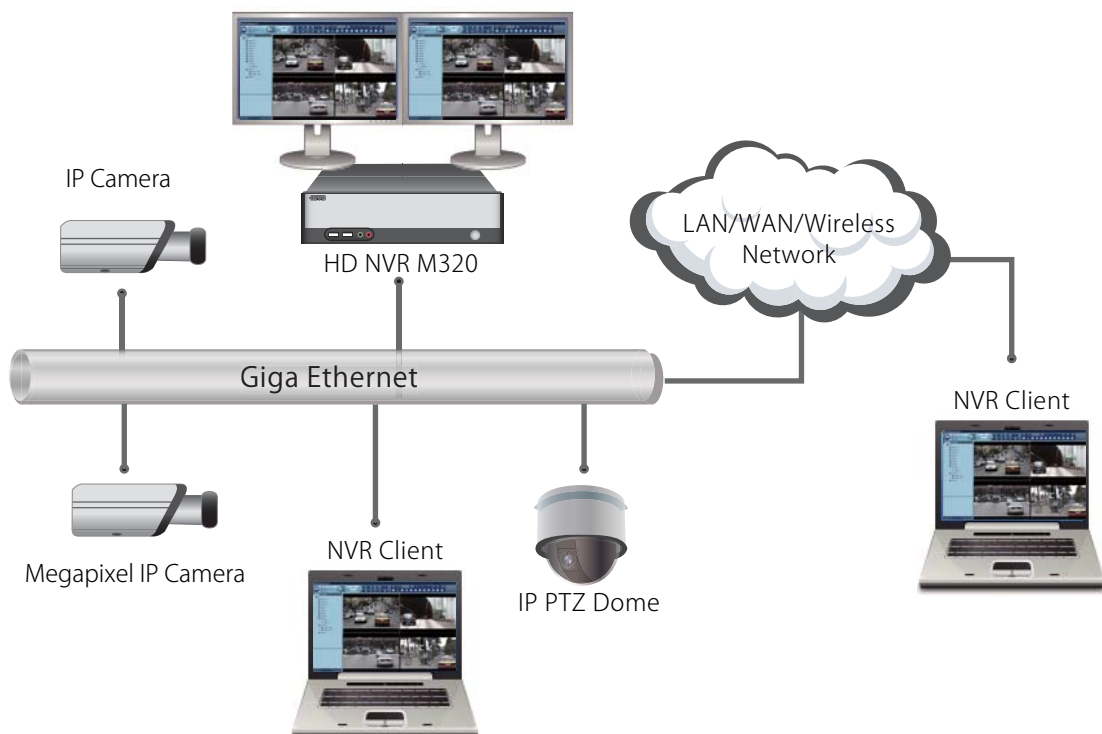


Storage Capability

Model	Channel	Codec	Resolution	FPS	7	10	15	30
M320	16	MPEG4	D1	Day	45	35	25	14
	16	H.264	1.3M		25	20	14	7
	16	H.264	3.0M		10	7	5	
	24	MPEG4	D1		25	20	14	7
	24	H.264	1.3M		14	10	7	

* Each HDD is 1.5 TB

System Diagram



Model No	M320
Processor	Intel Core2 Quad Q9400
Memory	DDR2-800 4G
Operation System	Windows XP Pro for Embedded
Hard Disk Drive	4 (3.5" HDD)
Display Port	2
USB Port	Front x 2 ,Rear x 4
LAN Port	Gigabit x 1
Dimensions(DxWxH)	395 x 95 x 325 mm
Power Consumption	200W
Power Supply	300W, Single

Camera Support List

