



M600 Series Network Video Recorder

GVD M600 is a powerful video surveillance system that scales easily to suit the needs of enterprise solution. It is a top-of-line, fault-tolerant network video recorder with redundant components. This rack-mountable recorder can scale to more than 100 TB video storage. It is the best solution for mission critical applications such as government complex, city surveillance, casino, transportation, and homeland security projects.

Key Feature

- Pre-built with 64 channel licenses, best for large scale D1, 1.3M to 8M camera installations
- Supports large data throughput for multiple megapixel cameras and triplex video functions
- Provides the unique Time Sector Engine (TSE) for best video read-write performance on hard disk drives (HDDs)
- Server class rack-mountable chassis
- Supports highly scalable and redundant solutions by using the GVD M800 Backup Server and M900 Fail-over Server
- Supports powerful GVD CMS workstation E100 for complete remote management on a large NVR network
- Redundant power supply and hot swappable HDD with RAID support
- Supports NVR client software for simple remote viewing

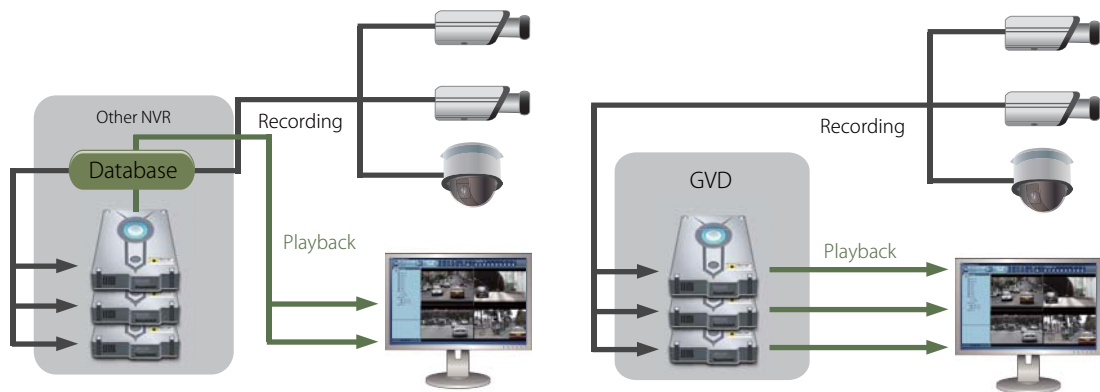


Features That Make a Difference

Simultaneous Live Video View, Recording and Playback

■ Time Sector Engine (TSE)

Time Sector Engine uses GVD's proven state of art technology and brings best video performance in the industry. Without using the inefficient free database design, the Time Sector Engine retrieves video data directly from pre-allocated HDDs and guarantees the performance for simultaneous live video viewing, video recording and playback. With only a few clicks of mouse, users can view every instance promptly when someone crossed a perimeter or moved an object.



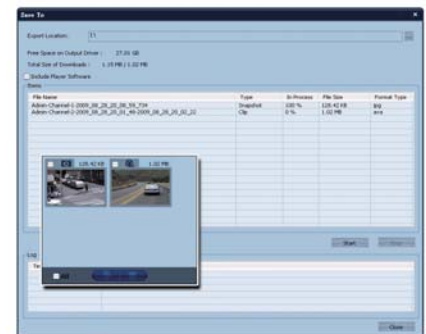
Database - Retrieves video from HDD through Index

TSE - Retrieves video directly from pre-allocated HDD

Exports Video with Clicks of Mouse

■ Spooler

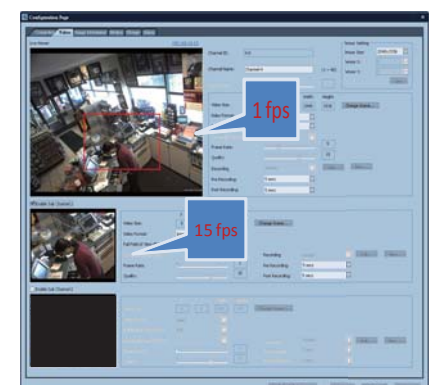
Spooler is an area designed for temporary video bookmarking. With single click of mouse, users can easily save and export video/images. The users could preview the video or snapshots in the spooler to verify the content and quality of video/images before exporting.



Saves Bandwidth and Storage by Sub-channel and Dual Codec Support

■ Sub-channel

By taking the full advantage of the camera multiple-streaming feature, GVD NVR supports up to two additional sub-channel streams independent from the main stream. With this powerful feature, users could flexibly plan their recording and streaming solution based on the available storage and bandwidth at each location.



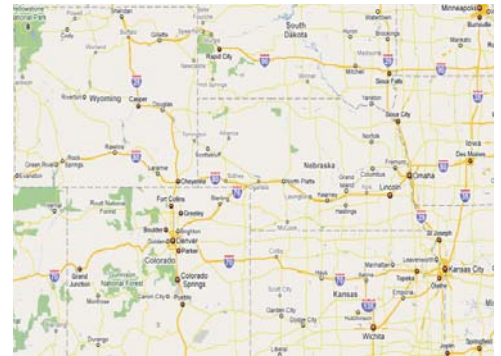
Features That Make a Difference

Supports HTML Map for Premise Overviews and Quick Navigation

■ HTML map

GVD NVR supports HTML maps for easy navigation to cameras in multiple locations. Users can directly download maps from internet or from any drawing tools.

With the powerful HTML feature, users can put camera icons on the maps, add hyperlinks and bring up live video directly from the map with a click of mouse.

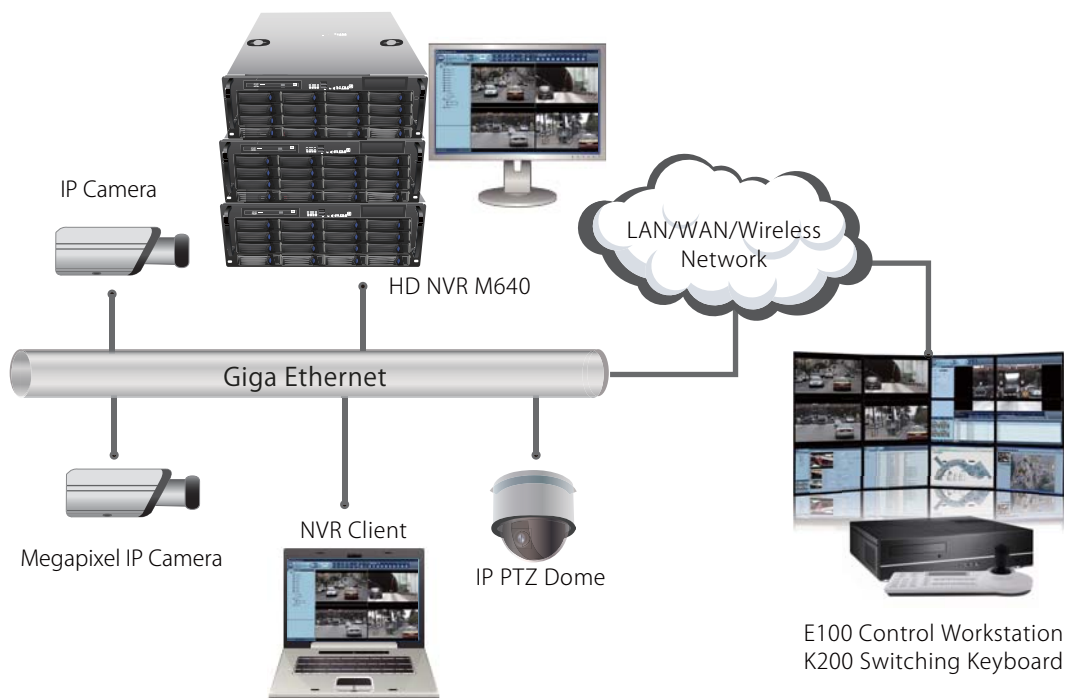


Storage Capability

Model	Channel	Compression	Resolution	Frames Per Second			
				7	10	15	30
M620	24	MPEG4	D1	40(days)	30	21	14
	24	H.264	1.3M	40	30	20	10
	32	H.264	3.0M	14	10	7	
	16+16	MPEG4 / H.264	D1 / 1.3 M	30	20	14	7
M640	32	H.264	1.3M	60	40	25	14
	64	MPEG4	D1	30	20	14	10
	64	H.264	1.3M	30	20	14	7
	32+32	MPEG4 / H.264	D1 / 3.0M	20	14	7	

*Noted: M620 based on 8 HDD trays of 1.5 TB each
M640 based on 16 HDD trays of 1.5 TB each

System Diagram



Model No	M610 / M620 / M630 /M640
Processor	Intel Xeon 3220 2.4G (M610) Intel Core2 Quad Q9400 (M630) Intel Core2 Quad Q8400 (M620) Intel Core2 Quad Q9400 (M640)
Memory	DDR2-800 4G
Operation System	Windows XP Pro for Embedded
Hard Disk Drive	3 / 8 / 12 / 16 (3.5" HDD) Hot Swappable ; Support RAID 0, 1, 5, 6
Display Port	1
USB Port	Front x 2 , Rear x 8 (M640)
LAN Port	Gigabit x 1
Dimensions(DxWxH)	569 x 430 x 43.5mm (M610) 660 x 430 x 132mm (M630) 660 x 430 x 88 mm (M620) 660 x 430 x 176 mm (M640)
Power Consumption	230 W / 300W / 360W / 420W
Power Supply	350W, Single (M610) 600W,(1+1) Redundant(M630) 600W,(1+1) Redundant (M620) 800W,(2+1) Redundant (M640)

Camera Support List

